



EDI TODAY!

Evolutionary EDI mapping on IBM i

GROWTH THROUGH PROGRESS

Why YOUR business demands world class EDI Solutions

Communication between companies is increasingly taking place electronically
- this applies in particular to business processes.

EDI (Electronic Data Interchange) is the exchange of structured business information between business partners in an organized, globally recognized and standardized way using modern communication methods.

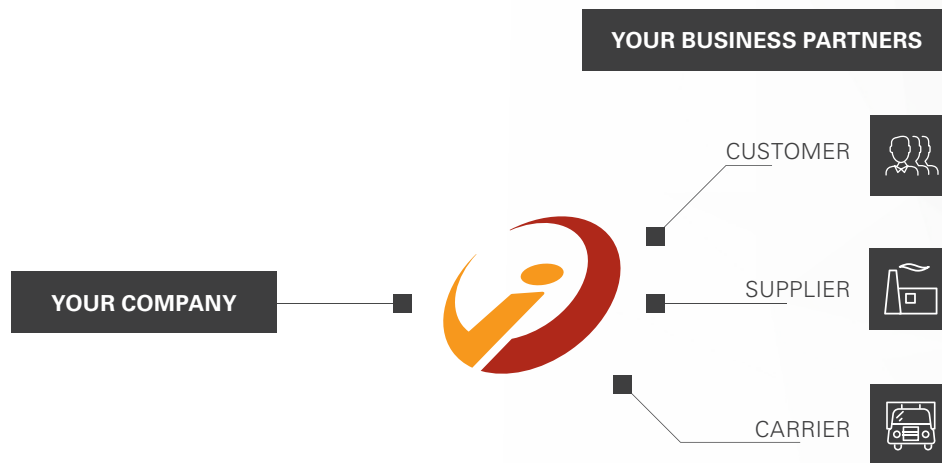
The main advantage is that data can be exchanged quickly, effectively and internationally from one computer to another. The control of business processes is considerably simplified, since the exchange of EDI information - i.e. business or trade data - between applications (e.g. ERP systems) takes place automatically without employees having to intervene manually. This saves time during data preparation and input as well as while checking for errors or media breaks. The direct transfer from one application to another ensures the integrity of the data as well as automatic further processing of the information. The use of an EDI system ensures a fast ROI, noticeably increases productivity, saves resources by saving postage, paper and fax costs as well as the

elimination of manual processing. A further effect is the unhindered development of new markets through the globally valid standard and problem-free connectivity to new customers and trading partners. Experience clearly shows that companies, suppliers and trading partners prefer EDI systems for cost reasons.

EDI - In practice this means an enormous administrative effort. Almost every partner uses different data formats and structures for his electronic order and delivery transactions. The complexity of numerous EDI formats and high implementation and operating costs have prevented companies with a smaller budget from opting for EDI. But i-effect® not only converts IBM i files into PC formats and PDF, but also converts database and ERP files into any desired EDI format.



i-effect® supports IBM i users to consolidate heterogeneous communication structures and to build up an EDI structure according to their needs. EDI users benefit from the freely scalable EDI volume: the number of trading partners and the amount of data transferred are unlimited. The price remains the same.



THE ADVANTAGES OF AN EDI SYSTEM:

- » High customer acceptance due to the elimination of paper
- » Time saving
- » Cash discount advantages through immediate processing of invoices
- » Cost savings by eliminating paper, postage and toner
- » Environmentally friendly
- » Increased speed of business processes
- » Error reduction through optimized and automated processes
- » Manual processes are eliminated through automation, e.g. when entering incoming invoices
- » Lower personnel expenses due to lower administrative costs and processing workload
- » Higher employee motivation through relief from routine activities
- » Faster response time
- » Reduction of waiting and idle times for documents
- » Intensification of relationships with business partners
- » Increased transmission speed
- » Competitive advantages over competitors through better service offering
- » Avoidance of media discontinuity
- » Cross-industry and cross-country functionality

Experience clearly shows:

Companies prefer suppliers and partners with a robust EDI system for cost savings.

INTELLIGENT MODULAR SYSTEM

The i-effect® solution your business requires



The i-effect® Solution Suite is offered as an intelligent modular system from which you can select the functional modules according to your operational requirements. The i-effect® module world is versatile and unique in this form. Future extensions can be integrated quickly and easily.

i-effect® is a central communication platform for your electronic business transactions. The solution brings e.g. IBM i raw data into the desired formats or sends business documents on the suitable transmission path to employees, customers and trading partners.

By automating processes, you free up personnel and time for value-adding activities in your company. Grow steadily and reliably with the help of fixed module prices. All modules of i-effect® work hand in hand and can be combined with each other as desired. The security functions such as encryption and signature can be used, for example, both in communication modules and as an independent function at file level.



CONVERT your data into any standard format

Supported formats:

ANSI X.12 CSV DB EDIFACT FLATFILE TRADACOMS XML ZUGFERD

With the help of the functionality of our EDI converter in i-effect® it is possible to convert different file formats. For example, you can convert the original formats that you use in-house into message formats of common EDI standards such as X.12, EDIFACT, XML etc. Our graphical EDI mapping module *MAPGUI facilitates the creation and maintenance of EDI mappings so that you retain control of your processes.

TRANSFER your EDI messages securely and reliably

Supported protocols: AS2 EMAIL FTP HTTP OFTP SOA

There are various communication protocols for transmitting the corresponding EDI messages to the respective partners. All common options are available, whether AS2, FTP, HTTP or EMAIL. With the help of the communication modules of i-effect® you can transfer your data automatically, securely and efficiently to your business partners.

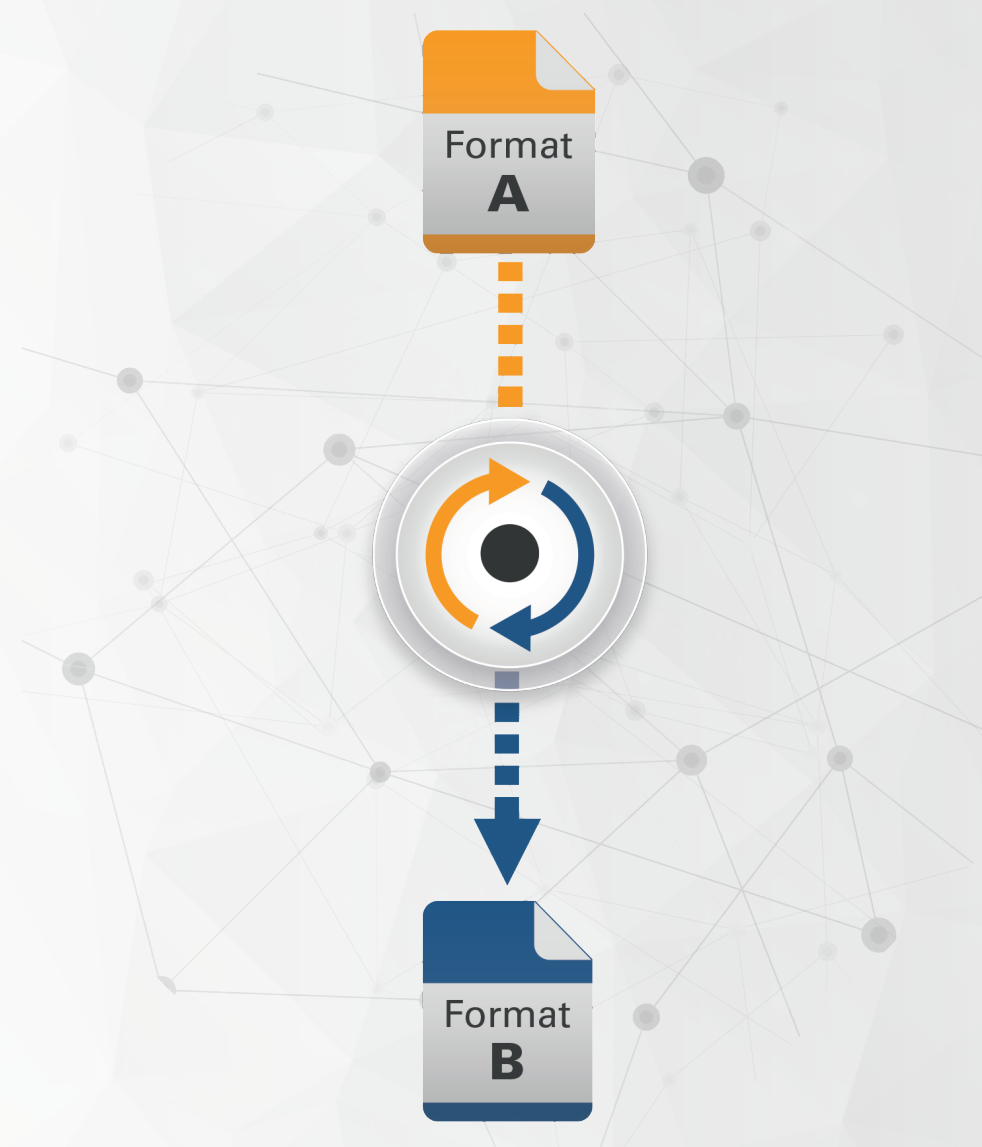
AUTOMATIZE your processes directly on the IBM i

To control your business processes and your entire EDI workflow on IBM i, our module *SERVER offers extensive possibilities for automation and monitoring of functional and work processes. Define time- and/or event-controlled tasks for the automated further processing of files or for controlling processes.

Take advantage of our EXTENSIONS

Extensions: CRYPT WEBCONTROL ZIP

You can also use our extensions to enhance your processes. For example, you can use the *ZIP module to compress data natively on IBM i. With the free graphical administration interface *WEBCONTROL you keep track of all processes that take place in i-effect®. Signature and encryption with *CRYPT allows you to secure your files and communication links on your IBM Power Systems.

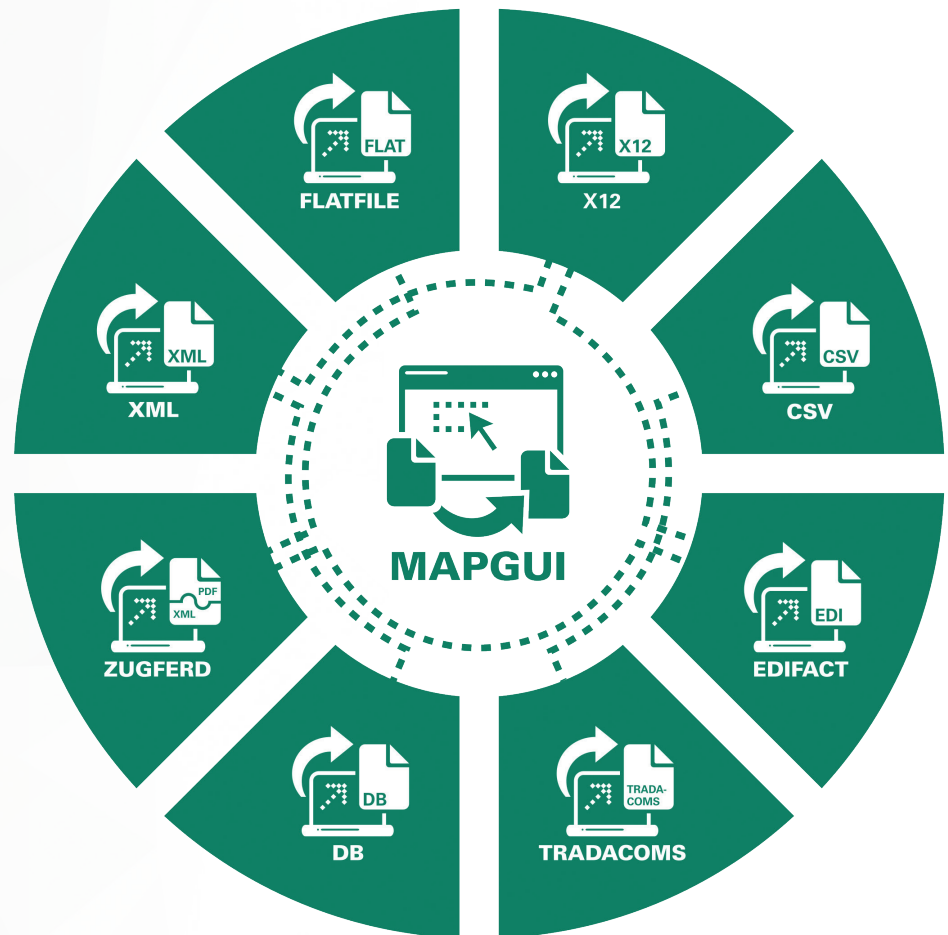


EVOLUTIONARY EDI-MAPPING ON IBM I

Modern EDI today

With i-effect® EDI conversion ties directly to the IBM Power Systems. Our standard solution creates a central communication platform for your electronic business transactions.

MAP
IT YOUR
WAY



ANY2ANY-CONCEPT

Convert your data into any standard format



Create error-free, efficient EDI data mappings in any combination – and open new markets without hindrance.

With the help of the functionality of our EDI converter in i-effect® it is possible to convert different file formats, such as EDI messages, IBM i files, PC formats or database entries as well as ERP files.

For example, you can convert the original formats you use in-house to message formats of common EDI standards such as X.12, EDIFACT, XML etc. Our graphical EDI mapping module *MAPGUI facilitates the creation and maintenance of EDI mappings so that you can keep track of your own processes.

Each i-effect® EDI module is available separately. This gives you freedom in process planning. Future extensions can be integrated quickly and easily.

EDI mapping with i-effect®

i-effect® *MAPGUI has made it possible to efficiently create a data mapping of EDI data in a graphical interface on IBM Power Systems.

The new i-effect® Solution Suite with its graphical user interface sets a new standard in the use of IBM Power Systems, whereby the claim of uniqueness becomes clear at first glance: Besides the technical highlights i-effect® impresses with its variety of functions. The workflow of a data mapping was thus made many times easier by the targeted implementation of the latest usability insights.

Optimum operating comfort and all information at a glance

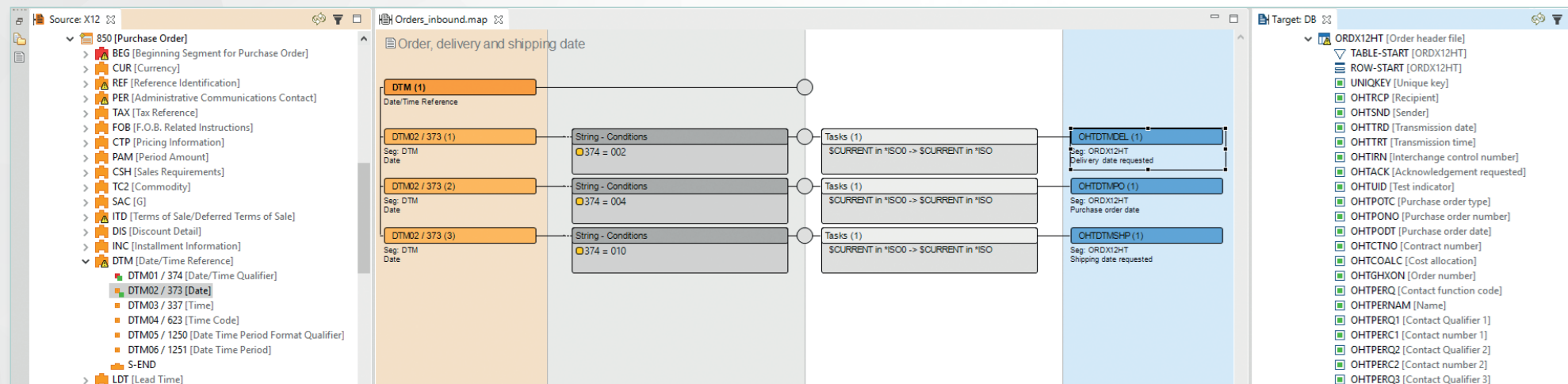
The self-explanatory and intuitive user interface is a familiar working environment for IT staff. For the first time it is possible to evaluate the complete mapping process in a source and target view. Conditions and tasks of a mapping as well as descriptions and properties for each individual element are graphically displayed on the stage. This creates a unique overview and reduces the error rate. With an integrated map tabbing function, several mappings can be opened, edited or compared simultaneously.

Drag and drop mapping

Drag & Drop mapping simplifies training for new employees, since programming skills are no longer required. This creates competitive advantages and reduces overall IT costs. To create a mapping the user simply drags an element from the source tree on the left and drops it in the working area. The user then drags and drops the corresponding element from the target view on the right onto the same workbench. This simple approach creates a complete mapping between two totally different data formats with automated datatype conversion and transaction security.

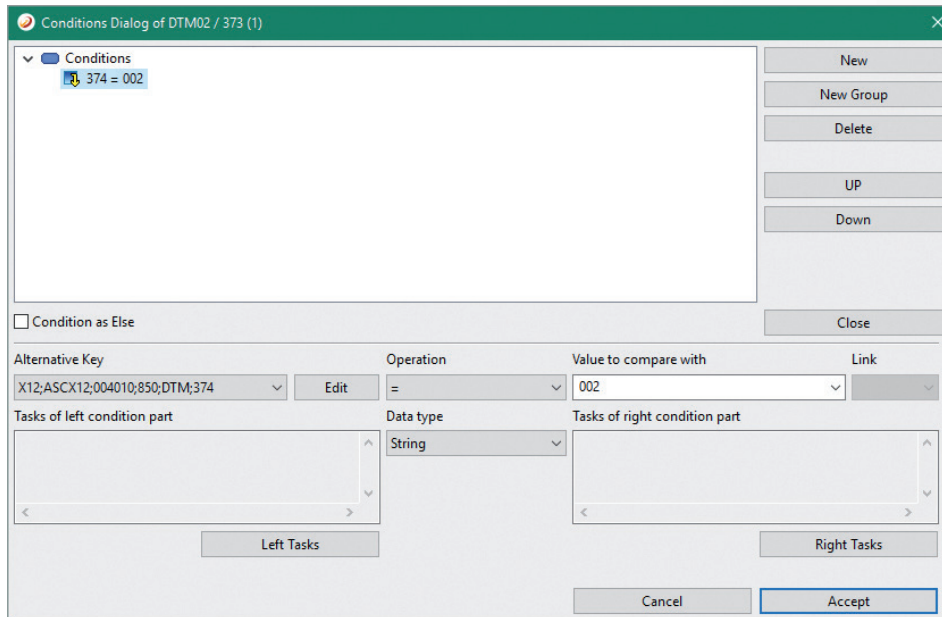
Any-2-Any conversion

All available EDI data format modules can be used in any combination. This gives customers an enormous flexibility and makes it possible to use i-effect® even for internal data transactions between different databases. Reading order transactions from an online shop's MYSQL database and writing into an IBM i DB2 database can now be accomplished without any programming. The customer just needs to create a DB to DB mapping in the i-effect® mapping GUI.



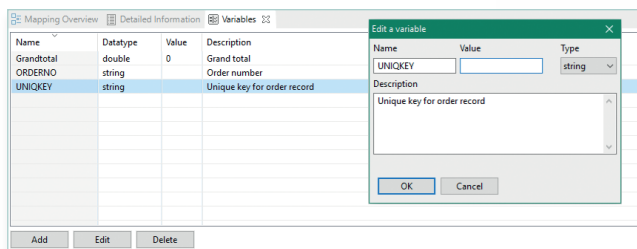
Conditions

Content depending decisions within a mapping are one of the most powerful functions needed when building dynamic data structure mappings. With i-effect® and the graphical mapping editor, the creation of complex conditions is easy. Dragging and dropping fields or variables in the conditions area and specifying the value for the condition creates the definition.



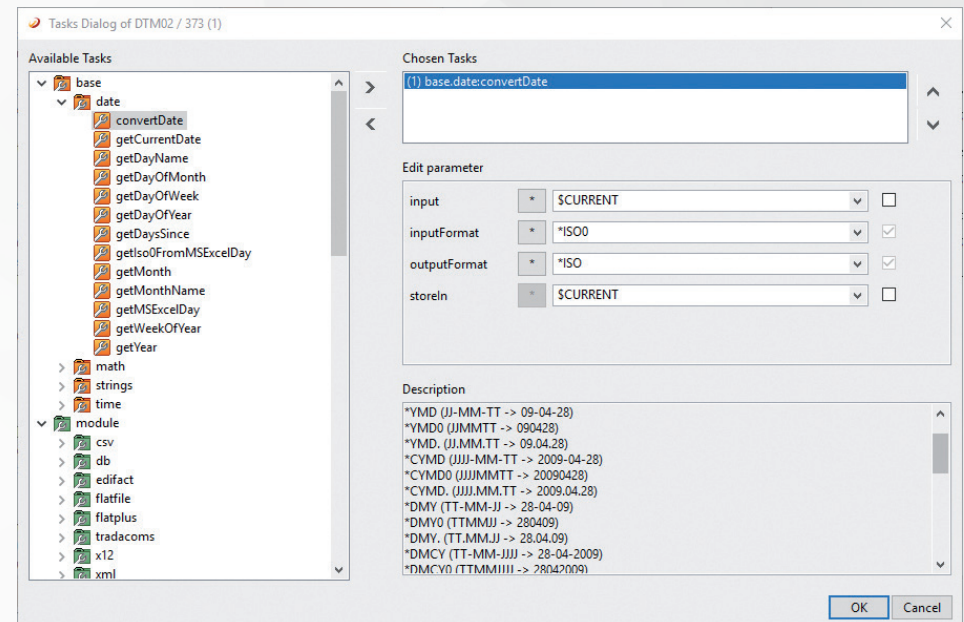
Variables

Storing values during a mapping or even defining calculations whose result must be stored for later use, is possible with using user defined variables. Different data types are available and variables can be used within all tasks that i-effect® has to offer. Some system wide variables are predefined in i-effect® and can be used to refer e.g. to partner master data fields that have to be used in a mapping.



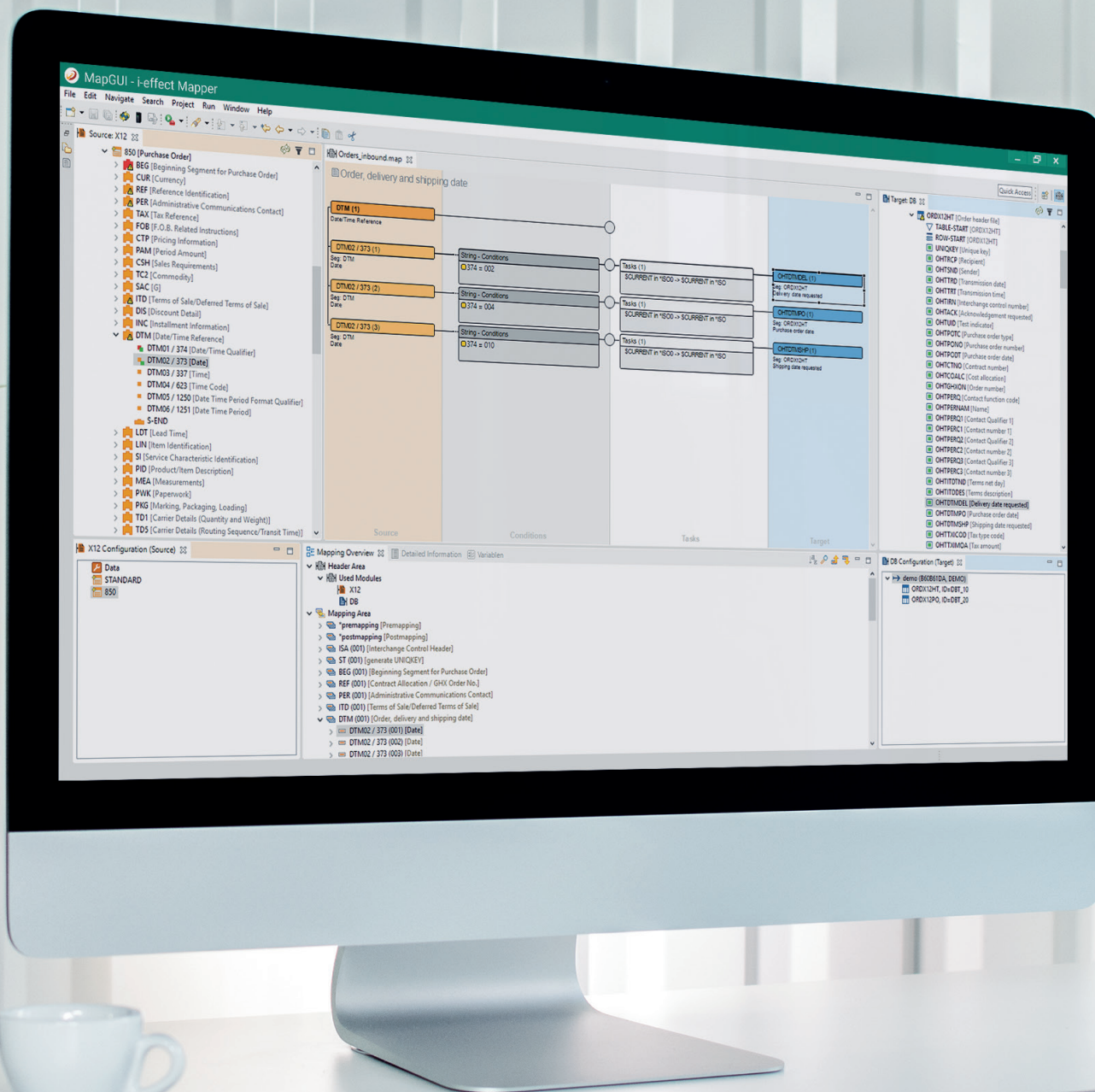
Tasks

In a mapping, the data to be transferred from one format to another, often has to be adjusted to specific requirements. This can be the formatting of numbers, the way a date is represented, or even a complex string manipulation. i-effect® has all this, already built into the product. The i-effect® task framework is a rich collection of predefined functions, all usable by dragging and dropping the function into the graphical task area. The user can choose from a great number of functions for date and time manipulation, string manipulation, mathematical functions and system tasks, that even allow to call native programs or SQL procedures.



Built-in syntax checking

All support data format modules of i-effect® have one thing in common. They automatically fulfill syntax and data format checks whenever data is processed. Field length, data types, repetition of data elements, code list values and even character sets are all validated against the underlying structure definition that comes with every module. If a file's structure does not comply with the industry standard definition, it is rejected. Because this is a general module feature, this functionality is available for input and output files. The system will not allow the creation of invalid EDI structures on the output and will also reject invalid files on the input side.





i-effect webcontrol

https://i-effect/webcontrol/

Filter configuration

322 total records, 281 entries selected, shown: from 1 to 15

| job | User | Number | File | File no. | Status | Creation date | Creation time | System name | User data | Form type | Output queue name |
|--------|---------|--------|----------|----------|--------|---------------|---------------|-------------|-----------|-----------|-------------------|
| QPTJOB | IEFFECT | 341211 | QPYOBLOG | 4610 | RDY | 2018/09/07 | 07:41:49 | J60B61DA | QSQRVR | *STD | QEZJOBLOG |
| | | 341211 | QPYOBLOG | 4609 | RDY | 2018/09/07 | 07:41:44 | J60B61DA | QSQRVR | *STD | QEZJOBLOG |
| | | 341211 | QPYOBLOG | 4608 | RDY | 2018/09/07 | 07:41:41 | J60B61DA | QSQRVR | *STD | QEZJOBLOG |
| | | 341211 | QPYOBLOG | 4607 | RDY | 2018/09/07 | 07:40:38 | J60B61DA | QSQRVR | *STD | QEZJOBLOG |
| | | 341211 | QPYOBLOG | 4606 | RDY | 2018/09/07 | 07:40:20 | J60B61DA | QSQRVR | *STD | QEZJOBLOG |
| | | 4605 | | | RDY | 2018/09/07 | 07:32:07 | J60B61DA | QSQRVR | *STD | QEZJOBLOG |
| | | 4604 | | | RDY | 2018/09/07 | 07:32:03 | J60B61DA | QSQRVR | *STD | QEZJOBLOG |
| | | 4603 | | | RDY | 2018/09/07 | 07:31:48 | J60B61DA | QSQRVR | *STD | QEZJOBLOG |
| | | 1 | | | RDY | 2018/09/07 | 07:31:47 | J60B61DA | QPOZSPWP | *STD | QEZJOBLOG |
| | | 1 | | | RDY | 2018/09/07 | 07:31:47 | J60B61DA | QZSHGH | *STD | QEZJOBLOG |
| | | 1 | | | RDY | 2018/09/07 | 07:31:46 | J60B61DA | QPOZSPWT | *STD | QEZJOBLOG |
| | | 1 | | | RDY | 2018/09/07 | 07:31:43 | J60B61DA | QPOZSPWT | *STD | QEZJOBLOG |
| | | 1 | | | RDY | 2018/09/07 | 07:31:37 | J60B61DA | QPOZSPWP | *STD | QEZJOBLOG |
| | | 1 | | | RDY | 2018/09/07 | 07:31:36 | J60B61DA | QPOZSPWP | *STD | QEZJOBLOG |
| | | 1 | | | RDY | 2018/09/07 | 07:31:34 | J60B61DA | QPOZSPWP | *STD | QEZJOBLOG |

68 total records, shown: from 1 to 15

Tabelle: SITZUNG - i-effect V2R7M0 - System: test71:10080 - Seriennummern: 65061DA - Partition: 6 (TEST71)

ADMINISTRATION VIA THE WEB INTERFACE

i-effect® with WebControl

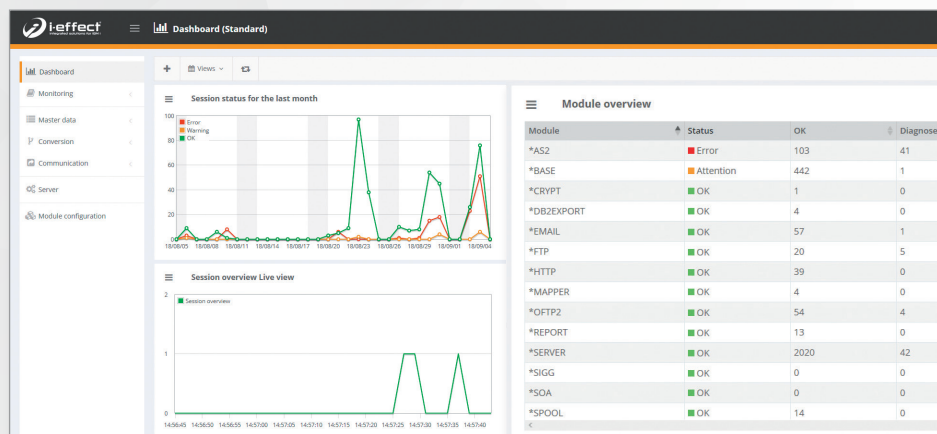
The GUI i-effect® WebControl enables intuitive control, administration and monitoring of the i-effect® software solution (in accordance with modern Web 2.0 standards) directly on the IBM Power Systems.

i-effect® WebControl is easy to understand and intuitive to use. An integrated logbook provides a quick overview of the various log entries for sessions, documents, processes and partners, while the master data management offers a quick and easy configuration of the software solution i-effect®. Individual settings can be defined for each user and several i-effect® versions can be managed on one system. i-effect® WebControl runs natively on IBM i with direct and resource-saving access to ZendServer and the IBM DB2 database.

FUNCTIONS OF THE GRAPHICAL USER INTERFACE:

Status display and system monitoring

A dashboard offers various displays and diagrams with the most critical live information, including statistics on CPU load, number of jobs, objects sent and received - as well as colored symbols to provide a high level overview of real-time system status.



Logbook with process tracking and task management

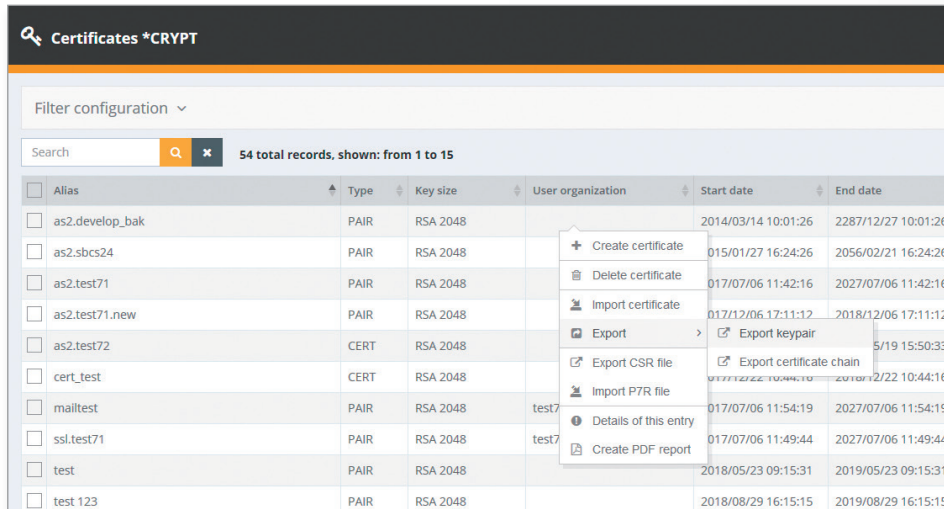
Besides the display of sessions, actions, documents and partners, this central information display shows a detailed insight to all i-effect® activities. From here a user has access to all technical logs as well as further information displays showing e.g. received and/or sent files which can be directly viewed from this browser interface.

The screenshot displays the i-effect WebControl Outbound documents logbook interface. It features a sidebar with navigation options: Filter configuration, Search, and 68 total records, shown: from 1 to 15. The main content area is a table listing outbound documents.

| Recipient | Recipient address | Registration date | Short archive file | Module | Session | Process |
|-----------|-------------------|----------------------------|--|--------|---------|---------|
| menten | as2.menten.com | 2018/07/12 15:50:07.806781 | .../IEFFECT/MAPPER/ARCHIV/INVOIC_3.EDI | *AS2 | 1858456 | 7057 |
| menten | as2.menten.com | 2018/07/12 14:59:20.271774 | .../AS2/ARCHIVE/SEND/FLATFILEDATA_37.FLT | *AS2 | 1858454 | 7047 |
| menten | as2.menten.com | 2018/07/12 14:59:17.138488 | .../AS2/ARCHIVE/SEND/FLATFILEDATA_24.FLT | *AS2 | 1858453 | 7044 |
| menten | as2.menten.com | 2018/07/12 14:59:16.706406 | .../AS2/ARCHIVE/SEND/FLATFILEDATA_54.FLT | *AS2 | 1858452 | 7043 |
| menten | as2.menten.com | 2018/07/12 14:59:15.944574 | .../AS2/ARCHIVE/SEND/FLATFILEDATA_11.FLT | *AS2 | 1858451 | 7042 |
| menten | as2.menten.com | 2018/07/12 14:59:15.427545 | .../AS2/ARCHIVE/SEND/FLATFILEDATA_2.FLT | *AS2 | 1858450 | 7041 |
| menten | as2.menten.com | 2018/07/12 14:59:15.024813 | .../AS2/ARCHIVE/SEND/FLATFILEDATA_41.FLT | *AS2 | 1858449 | 7040 |
| menten | as2.menten.com | 2018/07/12 14:59:14.670657 | .../AS2/ARCHIVE/SEND/FLATFILEDATA_42.FLT | *AS2 | 1858447 | 7038 |
| menten | as2.menten.com | 2018/07/12 14:59:14.650646 | .../AS2/ARCHIVE/SEND/FLATFILEDATA_3.FLT | *AS2 | 1858448 | 7037 |
| menten | as2.menten.com | 2018/07/12 14:59:13.680200 | .../AS2/ARCHIVE/SEND/FLATFILEDATA_55.FLT | *AS2 | 1858446 | 7034 |
| menten | as2.menten.com | 2018/07/12 14:59:10.857798 | .../AS2/ARCHIVE/SEND/FLATFILEDATA_25.FLT | *AS2 | 1858445 | 7028 |
| menten | as2.menten.com | 2018/07/12 14:59:10.482240 | .../AS2/ARCHIVE/SEND/FLATFILEDATA_38.FLT | *AS2 | 1858444 | 7027 |
| menten | as2.menten.com | 2018/07/12 14:59:05.423008 | .../AS2/ARCHIVE/SEND/FLATFILEDATA.FLT | *AS2 | 1858442 | 7024 |
| menten | as2.menten.com | 2018/07/12 14:59:05.295213 | .../AS2/ARCHIVE/SEND/FLATFILEDATA_19.FLT | *AS2 | 1858443 | 7023 |
| menten | as2.menten.com | 2018/07/12 14:59:04.954675 | .../AS2/ARCHIVE/SEND/FLATFILEDATA_12.FLT | *AS2 | 1858441 | 7022 |

Certificate management

Every aspect of EDI shall be maintainable in a single user interface. Therefore, also the maintenance of certificates, that are being used in e.g. communication tasks to secure your data, can be maintained in WebControl. You import/export and view certificates directly from the browser interface. No need to have any other certificate management software installed.



| Alias | Type | Key size | User organization | Start date | End date |
|-----------------|------|----------|-------------------|---------------------|---------------------|
| as2.develop_bak | PAIR | RSA 2048 | | 2014/03/14 10:01:26 | 2287/12/27 10:01:26 |
| as2.sbscs24 | PAIR | RSA 2048 | | 015/01/27 16:24:26 | 2056/02/21 16:24:26 |
| as2.test71 | PAIR | RSA 2048 | | 017/07/06 11:42:16 | 2027/07/06 11:42:16 |
| as2.test71.new | PAIR | RSA 2048 | | 017/12/06 17:11:12 | 2018/12/06 17:11:12 |
| as2.test72 | CERT | RSA 2048 | | 5/19 15:50:33 | |
| cert_test | CERT | RSA 2048 | | 017/07/06 11:54:19 | 2027/07/06 11:54:19 |
| mailtest | PAIR | RSA 2048 | test7 | 017/07/06 11:49:44 | 2027/07/06 11:49:44 |
| ssl.test71 | PAIR | RSA 2048 | test7 | 2018/05/23 09:15:31 | 2019/05/23 09:15:31 |
| test | PAIR | RSA 2048 | | 2018/08/29 16:15:15 | 2019/08/29 16:15:15 |
| test 123 | PAIR | RSA 2048 | | | |

Individual settings for each user

As the WebControl interface is a multi-user interface, each user can configure the appearance to his own needs. Language, dashboard appearance as well as filters, default sorting and the columns of tabular views can be configured individually.

Create support ticket directly in WebControl

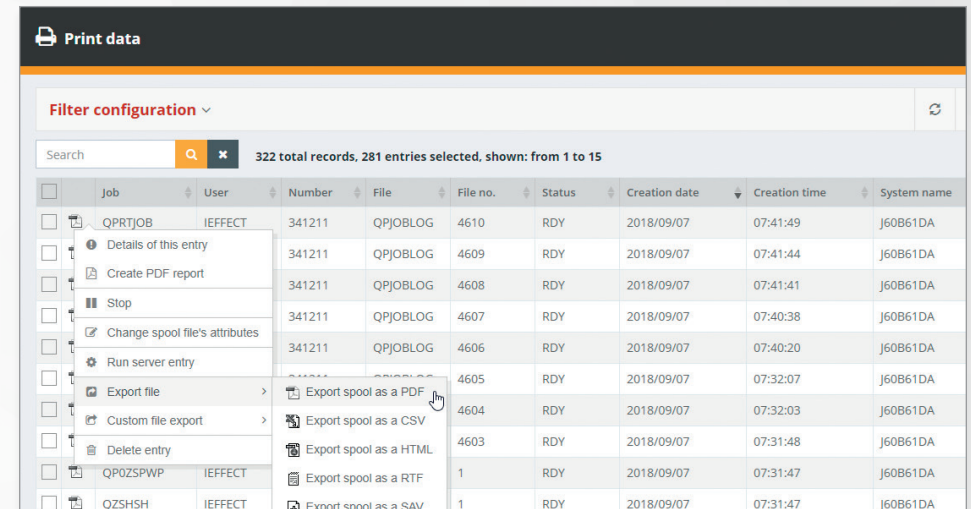
We make it easy for you to contact our support staff. With a single click, the system automatically collects all data from the task you select and creates a helpline support ticket. Thus, the support staff has immediate access to all relevant data such as logfiles and trace data.

Independent from platform and device

WebControl runs in any browser and can therefore be used on computers, laptops, tablets and phones.

Spooled files

To be able to even look at spooled files generated in conjunction with EDI processes, this interface provides its own view into outqueues and spooled files on the system. These printouts can be displayed directly within the WebControl interface as well as converted and downloaded into various PC formats like PDF.



| Job | User | Number | File | File no. | Status | Creation date | Creation time | System name |
|----------|---------|--------|----------|----------|--------|---------------|---------------|-------------|
| QPRTJOB | IEFFECT | 341211 | QPJOBLOG | 4610 | RDY | 2018/09/07 | 07:41:49 | J60B61DA |
| | | 341211 | QPJOBLOG | 4609 | RDY | 2018/09/07 | 07:41:44 | J60B61DA |
| | | 341211 | QPJOBLOG | 4608 | RDY | 2018/09/07 | 07:41:41 | J60B61DA |
| | | 341211 | QPJOBLOG | 4607 | RDY | 2018/09/07 | 07:40:38 | J60B61DA |
| | | 341211 | QPJOBLOG | 4606 | RDY | 2018/09/07 | 07:40:20 | J60B61DA |
| | | 341211 | QPJOBLOG | 4605 | RDY | 2018/09/07 | 07:32:07 | J60B61DA |
| | | 341211 | QPJOBLOG | 4604 | RDY | 2018/09/07 | 07:32:03 | J60B61DA |
| | | 341211 | QPJOBLOG | 4603 | RDY | 2018/09/07 | 07:31:48 | J60B61DA |
| QP0ZSPWP | IEFFECT | | | 1 | RDY | 2018/09/07 | 07:31:47 | J60B61DA |
| QZSHSH | IEFFECT | | | 1 | RDY | 2018/09/07 | 07:31:47 | J60B61DA |

Multilingual (German, English)

i-effect® as well as WebControl is available in different languages, currently English and German.

Intuitive design with improved usability

Using most recent web technology, WebControl has a usability approach that makes it the preferred way of working with your EDI environment. Filtering, sorting and querying the information in your EDI database is easy and straightforward. Everybody can use the interface as it is designed to be intuitive and easy to use.

WebControl update detached from i-effect®

WebControl has its own independent update technology where you can update your graphical EDI management tool independently from the central i-effect® instance. This gives you early access to more improved usability fixes and new functions.

MODULAR DESIGN FOR PERFECT INTEGRATION

The benefit of i-effect®?

i-effect® offers the capabilities to improve the way customers and suppliers do business together.

» Accelerate processes

Acceleration of internal and cross-company processes, improvement of planning quality and creation of real information transparency.

» Cost reduction

Process automation, unlimited number of communication and trading partners, electronic invoicing and usage-independent billing reduce your costs.

» Connection of business partners and end customers

Integration in applications and communication channels is much easier than with own software solutions.

» Synergies

Cost and innovation advantage thanks to standardized procedures and common interfaces for all B2B channels.

» Future warranty

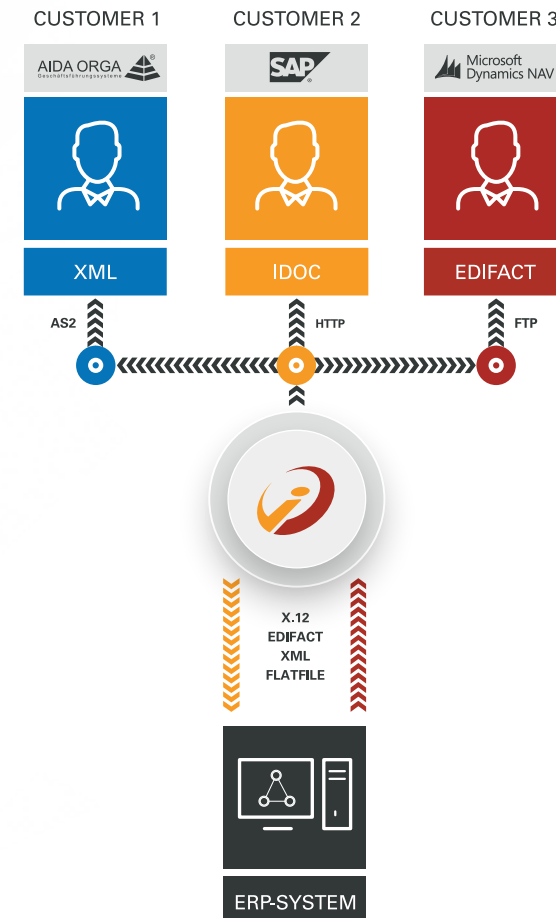
If required, extensions in the module configuration and fast implementation of new processes are possible at any time.

Example of use

Transmitting and receiving data

With electronic data exchange, orders, delivery notes and other documents can be exchanged between companies without manual intervention.

i-effect® takes over the transport of the data as well as the conversion into the format required by your business partners. You do not need to enter the data several times manually or send it by post, fax or e-mail. Waiting times and errors are reduced.



INTERFACE TO ANY ERP SYSTEM

EDI - Ready-to-go

Our solution can be connected to any ERP system, so there are no restrictions for you and your partners. Your current ERP system does not have to adapt to our solution, we adapt our solution to your system. You determine the EDI format and the communication, we take care of the rest.

i-effect® offers all functions that distinguish a modern EDI converter today. All message formats and all communication channels can also be used independently of the ERP.

| Message formats: | Communication channels: | ERP systems: | EDI message types: |
|---|---|---|---|
| <ul style="list-style-type: none">» VDA» EDIFACT» ZUGFeRD» XML» OpenTrans» EDITec» SAP-Idoc» Odette» ANSI X.12» Inhouse Files» CSV» Flatfile | <ul style="list-style-type: none">» AS2» OFTP» X.400» SMTP» SFTP» FTP» FTPS» HTTPS | <ul style="list-style-type: none">» SAP» AccountMate» Intaact» Dynacom» Epicor» NetSuite» Sage» Exact» Infor» Intuit QuickBooks» JD EDWARDS» Lawson» Microsoft Dynamics» Oracle Fusion | <ul style="list-style-type: none">» All X.12 documents like 810, 850, 855...» All X.12 based subsets like HIPAA, VICS...» All UN/EDIFACT documents like ORDERS, ORDRSP, INVOIC, DESADV...» All EDIFACT subset documents defined in UN/EDIFACT, EANCOM, EDITEC...» All SAP IDOC documents like ORDERS01, INVOIC01, DELVRY01...» All XML documents like OpenTrans, EbXML, myOpenFactory... |

THE PROCESS OF DEPLOYMENT AND PRODUCTION STARTUP IS CRITICAL

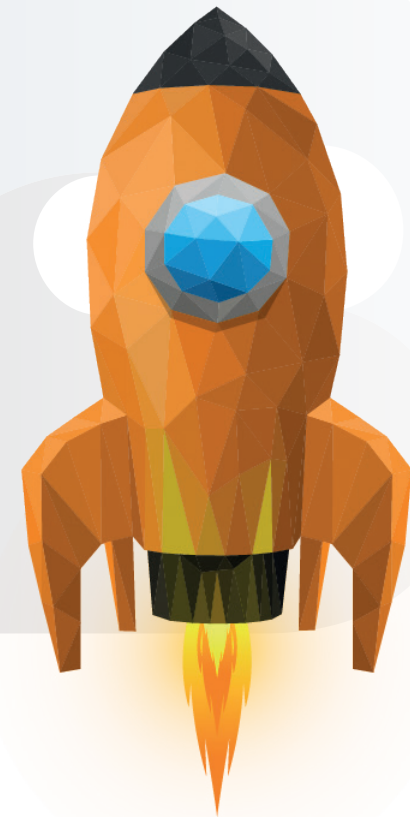
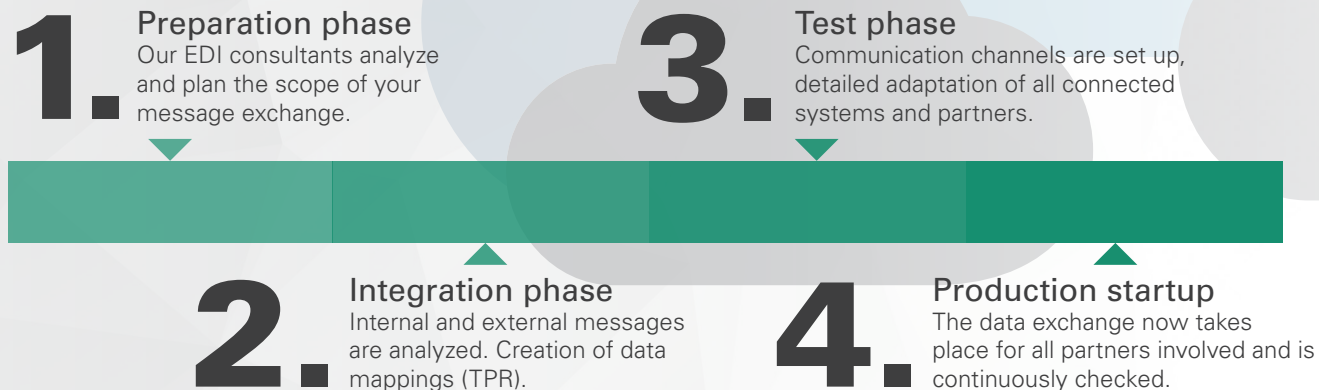
The start process

We have developed a proven implementation method that ensures a smooth and efficient start of your EDI exchange.

Our team provides a dedicated contact who will advise in detail on EDI issues - as well as guide through the entire EDI integration process from preparation to production startup.

You provide us with a contact person who accompanies the project and has precise knowledge of your business processes. The start process is organized without interrupting your ongoing operations. External systems of business partners and customers worldwide can be easily connected. This is made possible by standardized interfaces and file formats with which you can take your company to the next level and thus be prepared for future plans and extensions.

OUR 4 IMPLEMENTATION PHASES



SCALABLE EDI SOLUTION AS NEEDED

i-effect® – More than just EDI

EDI – In practice this means an enormous administrative effort. Almost every partner uses different data formats and structures for its electronic ordering and delivery transactions. The complexity of numerous EDI formats and high implementation and operating costs have prevented companies with a smaller budget from opting for EDI. But i-effect® does not only convert IBM i files to PC formats and PDF, but also brings database and ERP files

into any desired EDI format. i-effect® supports IBM i users in consolidating heterogeneous communication structures and building up a demand-oriented EDI structure. EDI users benefit from the freely scalable EDI volume: the number of trading partners and the amount of data transferred are unlimited. The price remains the same.

Facts & Figures

*EDIFACT

- » All UN/EDIFACT message types
- » All subsets

*XML

- » All XML Structures including industry standards like OPEN-TRANS or ebXML as long as an XSD file is available

*CSV

- » Comma separated files according to RFC4180 can be processed if described using the directory format XML language of i-effect®

*X.12

- » All ANSI ASC X.12 message types and versions

*FLATFILE

- » Record oriented or flatfile structures even with multi-level record grouping can be processed if described using the directory format XML language of i-effect®

*TRADACOMS

- » All 25 UK message definitions

*DB

- » DB <> ANY conversion
- » Connection to DB2, MySQL, MSSQL and Oracle databases
- » Commit control (rollback) for seamless transactions in DB2 tables when conversion terminates

Conversion

- » Any2Any-Concept
- » Select any input and output files from IFS or DB2 file system
- » Flexible mappings and directories
- » Module-based extension concept (EDIFACT, FLATFILE, XML, X.12, CSV...)
- » Support of content-oriented interface files
- » RMI server-based on IBM Power Systems
- » JOB server-based on IBM Power Systems

- » Platform independent graphical mapping client (eclipse®)
- » RUNMAP command as basis for triggering mapping processes
- » Integration of the i-effect® logbook for optimal monitoring of mapping processes
- » Error handling and advanced logging
- » Integration of partner master-data
- » Own subsystem on IBM Power Systems

Graphical user interface

- » Arbitrary modules in the source and target view (Any2Any mapping)
- » Mapping conditions to control the value assignment on the target side
- » Mapping tasks (system, base, module, user) for value formatting. Variable assignment with the possibility of using functions (mathematical, date, time, string)
- » Mapping trigger for precise

control of the mapping process

- » Mapping variables as buffer for values
- » Individual module configuration via graphical frontend

Communication and control

- » Any volume of data, unlimited number of trading partners
- » Continuous monitoring of the background process via WebControl
- » Standardized message monitoring

Master data

- » Administration of sender and recipient details via a central partner database
- » Any number of communication channels per partner
- » Unlimited sender addresses for partner aliases

Mapping

- » Any number of mappings, condition-controlled, partner-master-controlled, XML-based

- » Any number of database input and output objects (SQL tables, physical and logical files)
- » Dynamic reading and writing of database records
- » All database field formats
- » Output of constants

Security

- » Encryption of files and communication links (RSA, AES and 3DES)
- » Digital signature for files and communication links (PDF, EDIFACT, P7S, P7M and PKCS#7)

Misc

- » ZIP, ZIP64, GZIP, TAR and 7z
- » Unicode and DBCS support
- » IASP enabled

EDI PROFESSIONALS SINCE 1989

Who is behind i-effect®?



menten GmbH develops and sells a high-quality application for electronic data exchange on IBM Power Systems used in medium-sized companies. As a solution for B2B communication and the automation of electronic business processes, it is used by well-known medium-sized companies at home and abroad to handle data conversions, communication, signatures and encryption.

With its many years of experience in the project business, menten GmbH has been supporting its customers since 1989 in the design, installation, setup and commissioning of complex EDI connections.



Software Made in Germany

The „Software Made in Germany“ initiative is under the patronage of the Federal Ministry of Economics and Energy.



IBM Advanced Business Partner

We have been an IBM partner since 2001. Recognizing the platform, we still value our independence and are IBM Independent Software Vendor (ISV).



EDI specialists since 1989

menten GmbH has been a specialist for the exchange of electronic business documents since 1989. More than 340 customers in 26 countries trust in our EDI solution i-effect®.



SOFTWARE DEVELOPMENT



EDI CONSULTING



EDI IMPLEMENTATION



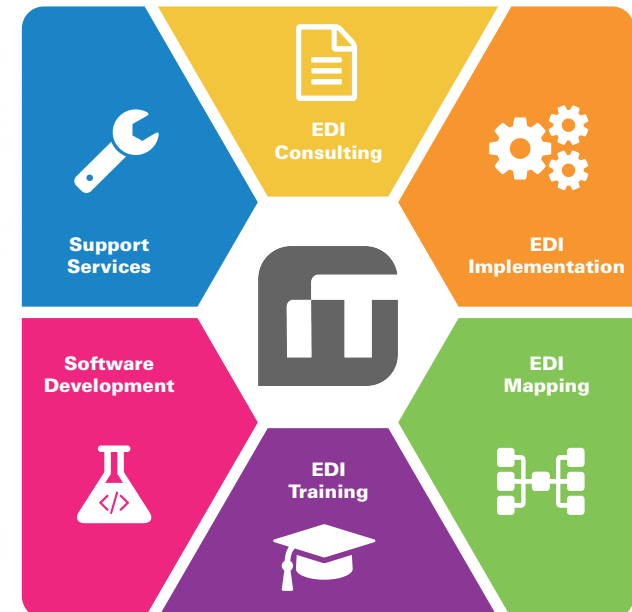
EDI TRAINING



SUPPORT SERVICE



EDI MAPPING



Our customers

Our customers are IBM Power Systems users across a wide variety of industries. Over the years menten GmbH has established itself as a strategic partner for customers who manage central processes within their organization. Our customers are able to work more effectively thanks to menten's broad depth of IBM IT landscape expertise.

Industries

- » Automotive
- » Building Materials
- » Chemical Industry
- » Financial Services
- » Healthcare
- » Wholesale
- » Housewares
- » High-Tech & Electronics
- » Utilities
- » Logistics
- » Aerospace
- » Machinery, Appliances & Components
- » Media
- » Furniture Industry
- » Fashion & Textiles
- » Food Industry
- » Tourism
- » Packaging Industry
- » Insurance
- » Utilities
- » Webhosting



trinks

Medienhaus Lensing



Mitutoyo



DATAEXPRESS
Ihr Daten-Treuhänder

DK
DELIUS KLASING

HUBERHOLDING

WEIDENHAMMER
PACKAGING GROUP

DACHSER
Intelligent Logistics

expert

ABUS

TRÖBER
FABRICATIONS - ROSSCHKE - WIDENMANN

rhenag
Energie und mehr

Schleswiger
VersicherungsVerein

wortmann
SCHUH-HOLDING



BETTENRING
Der Marketing-Partner für den Bettenfachhandel



SANYO



Küppersbusch
ALLERFEINSTE KÜCHENTECHNIK

ONMETALL
Professional Goods For D.I.Y.



maxit

SAINT-GOBAIN

Member BMC Group
Ingersoll
Cutting Tools

media control GfK
INTERNATIONAL

ING DiBa



DOLMAR
Ein Unternehmen der Thaketa Gruppe

USG

DEPRAG



erne fittings
the safe connection

Gabor

HÖDLMAYR
INTERNATIONAL

KONSUM

+egerland+

The Law Society
of Upper Canada | Barreau du
Haut-Canada



bsn

Teramikros

Alloga
Innovative services
for the Healthcare Market

notte
küchen

REMONDIS

MDS

PAUL LANGE & CO
BIKEPARTS AND MORE

aquatherm



bauformat
Küchen

ag
bito

BOHMANN
Verlaggruppe

VOLKSWAGEN FINANCIAL SERVICES
AUTOMOBILGESELLSCHAFT

meister M



SOCIETE GENERALE
Private Banking

BRIDGESTONE

ABK
BANK

more on i-effect.com

Interested in our Solutions for IBM i?

Then test i-effect® now – without risk!



HOW THE TEST PHASE WORKS

1. Customer provides information on their system.
2. A non-binding offer is presented and accepted.
3. We install i-effect® on your system.
(Remote installation with Teamviewer or on-site installation on request)
4. Customer tests i-effect® for 30 days.

AT THE END OF THE TEST PHASE

- ✓ If satisfied with the solution:
You continue to use i-effect® without interruption.
Invoices match with the details stated in the offer, as agreed.
- ✗ If customer prefers to commit at later time:
We uninstall i-effect®. Customer does not receive an invoice.

Ordering, Information, Advice

Free 30-day trial, detailed feature overview
of the modules: www.i-effect.com



menten GmbH

- 📍 An der Gohrsmühle 25
51465 Bergisch Gladbach
- ☎ + (49) 2202 2399 0
- ✉ info@menten.com
- 🌐 www.menten.com
- 👤 Managing director: Ralph Menten

Short profile menten GmbH

menten GmbH is aimed at medium-sized IBM Power Systems users in all industries. Since 1989, the team has focused on the development of server-based IBM i standard solutions. Service and maintenance, system technology and hardware sales flank the IT services around the server family.

