



i-effect[®]

The integrated solution for IBM i

What is i-effect®?

The synergy of electronic data interchange (EDI) and data integration

■ Intelligent modular system

The i-effect® Solution Suite is offered as an intelligent modular system from which you can create your individual operational requirements. The module world of i-effect® is manifold and unique in its form. Future expansions can be integrated quickly and easily.

i-effect® is a central communication platform for your electronic business transactions. The solution brings e.g. IBM i raw data into the desired formats or sends business documents on the suitable transmission path to employees, customers and trading partners.

■ Convert your data into any standard format

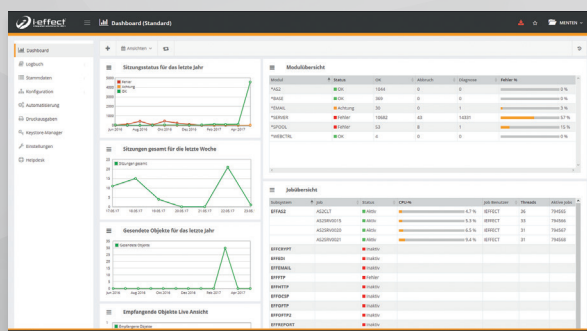
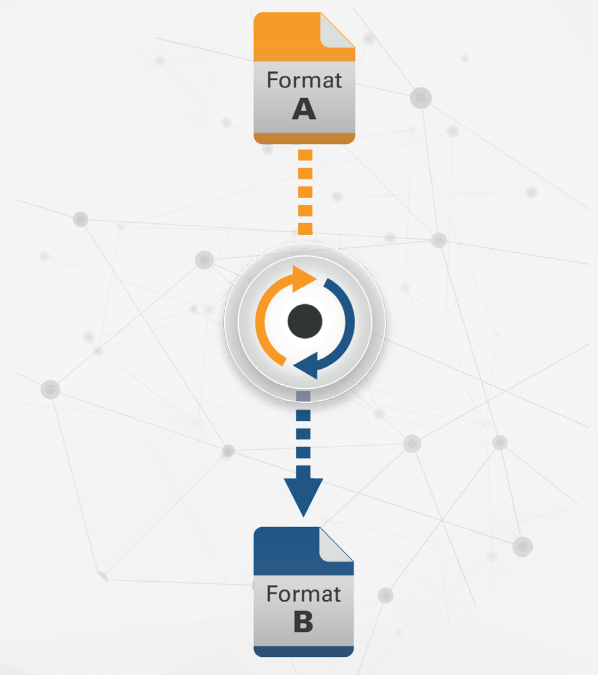
Supported formats: **ANSI X.12** **CSV** **DB** **EDIFACT** **FLATFILE**
TRADACOMS **XML** **ZUGFERD**

With the help of the functionality of our EDI converter in i-effect® you can convert different data formats. For example, you can convert the original formats that you use in-house into message formats of common EDI standards such as UN/EDIFACT, ODETTE, VDA, ANSI X12, etc. Our graphical EDI mapping module *MAPGUI facilitates the creation and maintenance of EDI mappings so that you retain control of your processes.

■ Transfer your EDI messages securely and reliably

Supported protocols: **AS2** **EMAIL** **FTP** **HTTP** **OFTP** **SOA**

There are various communication protocols for transmitting the corresponding EDI messages to the respective partners. All common options are available, whether AS2, OFTP or HTTP. With the help of the communication modules of i-effect® you transfer your data automatically, securely and efficiently to your business partners.



Graphical administration

The graphical user interface module *WEBCONTROL gives you an intuitive control, administration and monitoring of the software solution i-effect® according to modern web standards directly on IBM Power Systems.

■ Automate your processes directly on IBM i

To control your business processes and your entire EDI workflow on IBM i, our module *SERVER offers extensive possibilities for automation and monitoring of functional and work processes. Define time- and/or event-controlled tasks for the automated processing of files or for controlling processes.

■ Use our extensions

Extensions: **CRYPT** **WEBCONTROL** **ZIP**

You can also use our extensions to enhance your processes. For example, you can use the *ZIP module to compress data natively on IBM i. With the free graphical administration interface *WEBCONTROL you keep track of all processes that take place in i-effect®. The encryption with *CRYPT allows you to secure and sign files and communication paths on your IBM Power Systems.

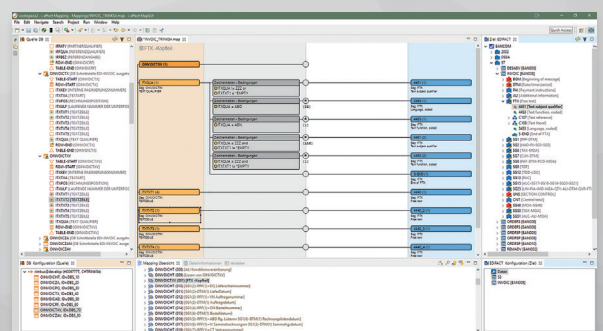
■ Software functions

- **Any2Any** EDI-Conversion
- **EDIFACT** - all UN/EDIFACT message types and subsets
- **XML** - all XML structures including industry standards like OPENTRANS or ebXML as long as an XSD file is available
- **CSV** - comma separated files according to RFC4180 can be processed if described using i-effect's directory format XML language
- **X.12** - all ANSI ASC X.12 message types and versions
- **FLATFILE** - record oriented or flatfile structures even with multi-level record grouping can be processed if described using the directory format XML language of i-effect®
- **DB** - connection to DB2, MySQL, MSSQL and Oracle databases
- **TRADACOMS** - all 25 UK message definitions
- Communication via AS2, FTP, HTTP, E-Mail and OFTP
- Spool conversion (Input: all data streams, Output: PDF, PDF/A, XLS, XLSX, XML, CSV, HTML, TIFF, GIF, RTF, TXT, SAV)
- Encryption with 2048bit, PGP, AES, Triple-DES
- Compression in ZIP, GZIP, ZIP64, Tar and 7z
- Automation of all processes
- Modular or as a complete solution
- Continuous support for DB2 and IFS
- Unicode and DBCS support
- With free graphical administration interface WebControl
- IASP enabled



Graphical mappings

Keep track of your mappings and use the *MAPGUI module of i-effect® to create and maintain EDI mappings. You can use the graphical user interface to map data from source to target formats yourself.



Interested in our Solutions for IBM i?

Then test i-effect® now - without any risk!



HOW THE TEST PHASE WORKS

1. Customer provides information on their system.
2. A non-binding offer is presented and accepted.
3. We install i-effect® on your system.
(Remote installation with Teamviewer or on-site installation on request)
4. Customer tests i-effect® for 30 days.

AT THE END OF THE TEST PHASE

- ☒ **If satisfied with the solution:**
You continue to use i-effect® without interruption.
Invoices match with the details stated in the offer, as agreed.
- ☒ **If customer prefers to commit at later time:**
We uninstall i-effect®. Customer does not receive an invoice.



Ordering, Information, Advice

For free 30-day trial and detailed feature overview
of the modules: www.i-effect.com



menten GmbH

📍 An der Gohrsmühle 25
51465 Bergisch Gladbach

☎ + (49) 2202 2399 0

✉ info@menten.com

🌐 www.menten.com

👤 Managing director: Ralph Menten

Short profile menten GmbH

menten GmbH is aimed at medium-sized IBM Power Systems users in all industries. Since 1989, the team has focused on the development of server-based IBM i standard solutions. Service and maintenance, system technology and hardware sales flank the IT services around the server family.

